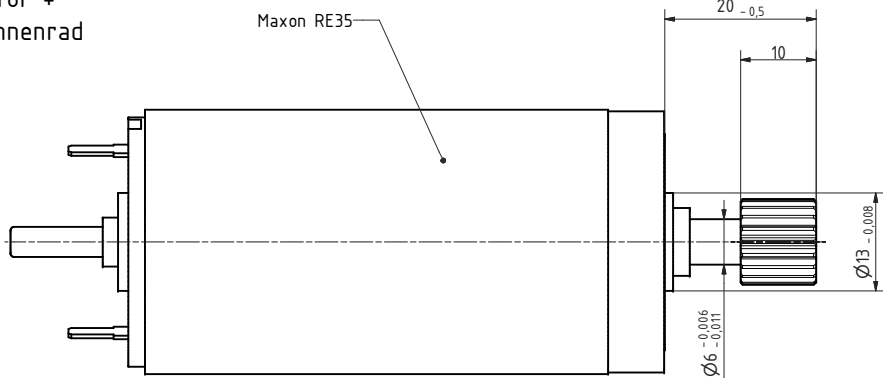
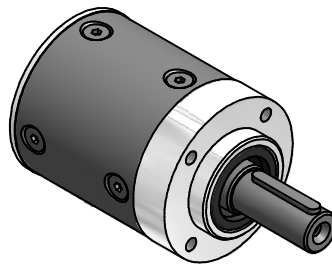
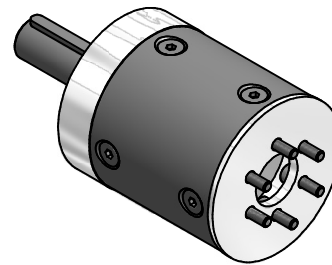
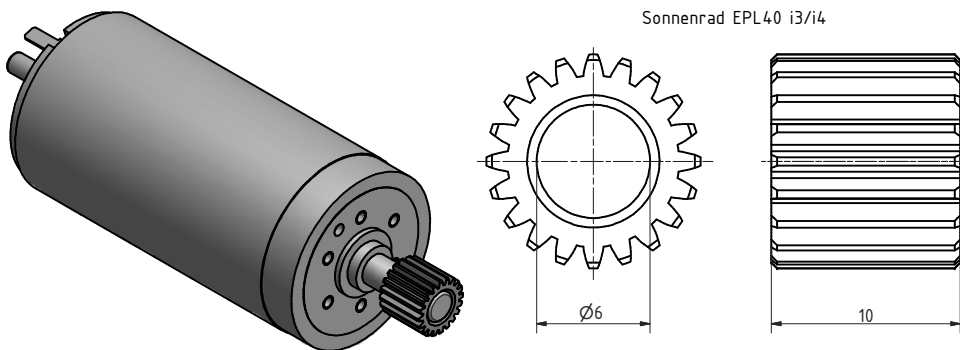


Motor +
Sonnenrad



Sonnenrad EPL40 i3/i4



i =	3	4
rated torque continuous (Nm)	0,7	0,7
rated torque intermittent (Nm)	1,4	1,4

output shaft bearing: grooved ball bearing 2RS
 ● max. radial load: 400N bei n2=100 1/min / Lh> 10.000h
 ● max. axial load: 300N bei n2=100 1/min / Lh> 10.000h
 ● reference to shaft center at temp. =30°C
 straight-toothed planetary gearbox
 backlash relating to the output shaft: ≤ 20 arcmin
 lifetime: > 10.000h
 efficiency: by rated load 94% (depends on ratio)
 lubrication: lifetime-lubrication
 nominal output torque at n1 = 3000 1/min
 operating temperature: -20°C bis +80°C
 protection system IP 54
 planet wheels: plastic

consider mounting instruction
subject to modifications.

Allgemein- toleranzen ISO 2768-m		Kanten ISO 13715	Maßstab 2:1 (5:1 / 10:1)	(Gewicht)
Verwendungsbereich		Datum 20.04.2016	Name H.Offermann	
		EPL40/1 i3/i4		
		für Motorwelle Ø6 - Motor: Maxon RE35		
		MF: Z013 Tk019 6x02,9		
		EISELE		Blatt 1 / 2
		80040012		A2
Zust.	Änderungen	Datum	Name	Ursprung 40040307
				Ersatz für
				Ersetzt durch